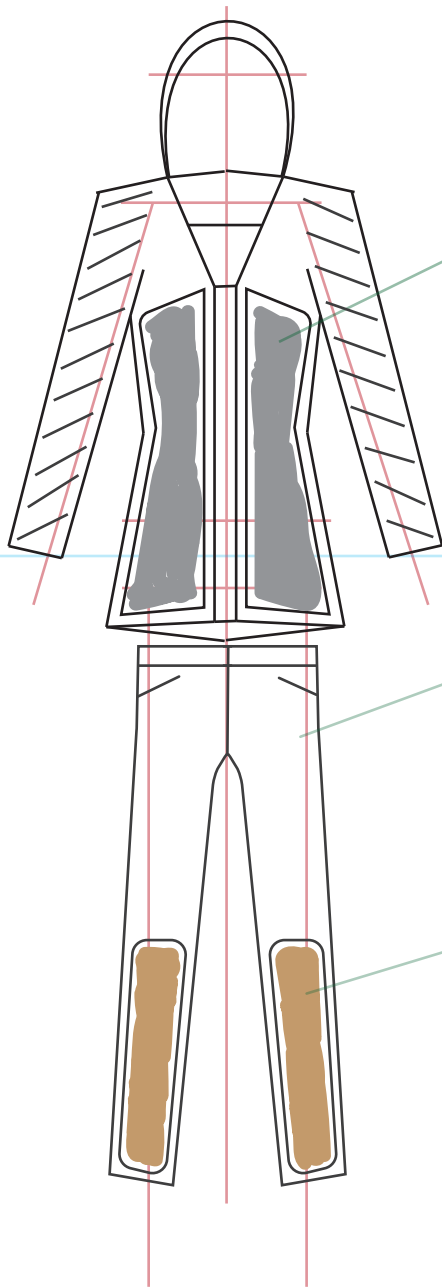
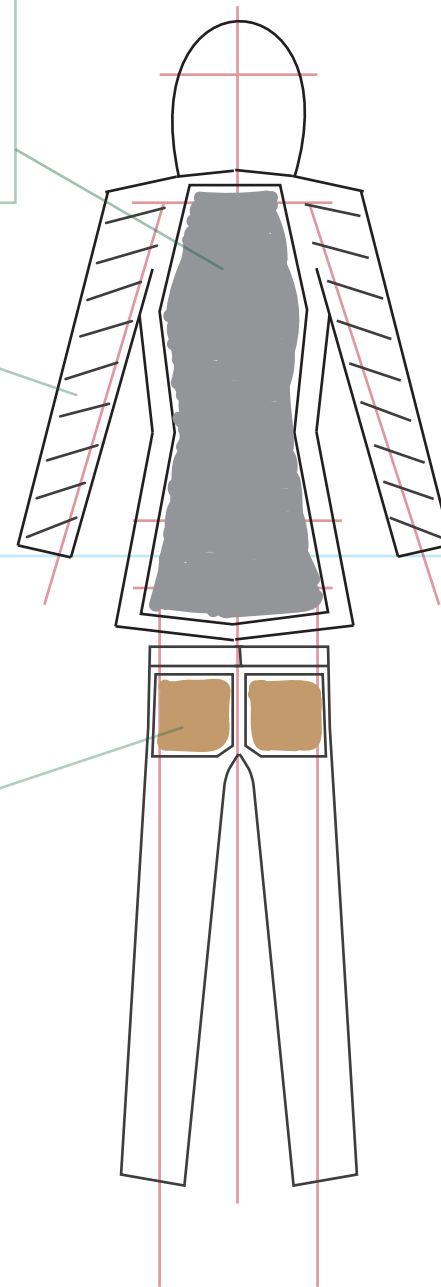


Front



Back



A solar panel exterior layer connected to a thermal coil interior layer that stores energy from the sun's light to warm the wearer when temperatures reach a certain level.

Garment made from recycled ocean plastic yarn sprayed with a hydrophobic coating to protect the heating system from water damage.

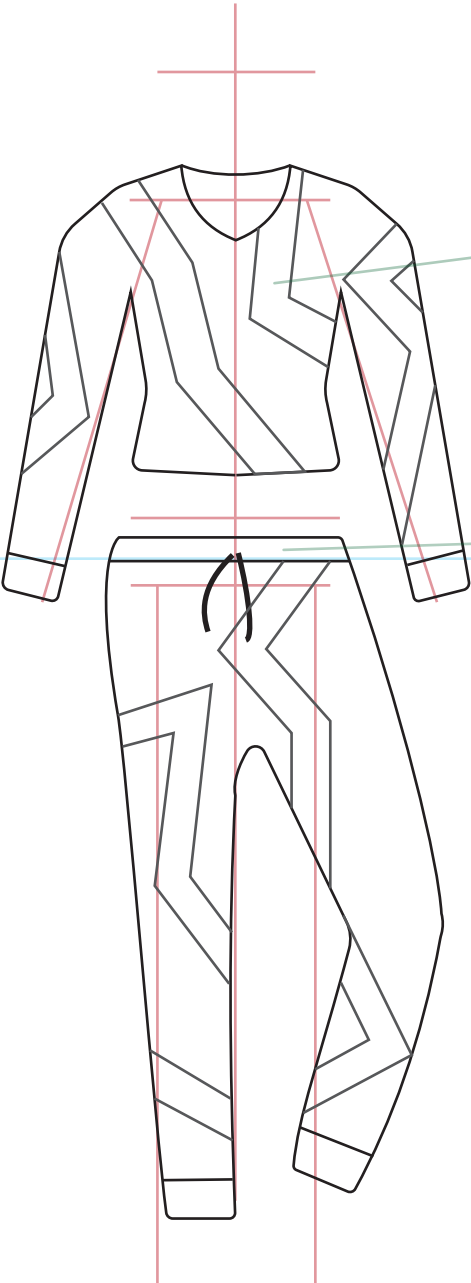


Organic hemp garment sprayed with a hydrophobic coating.

Re-inforced protection on shins and rear using multiple layers of recycled ocean plastic.



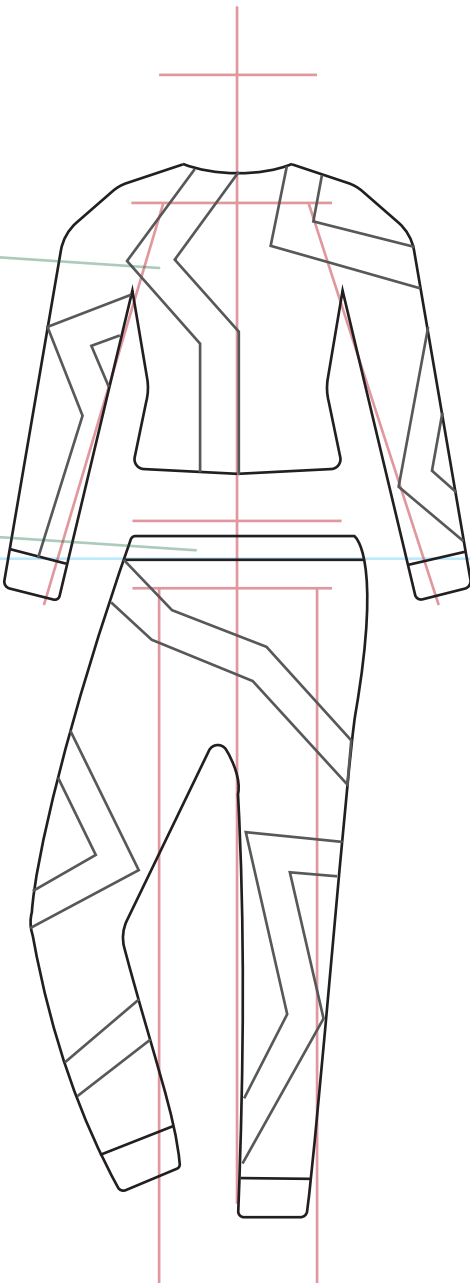
Front



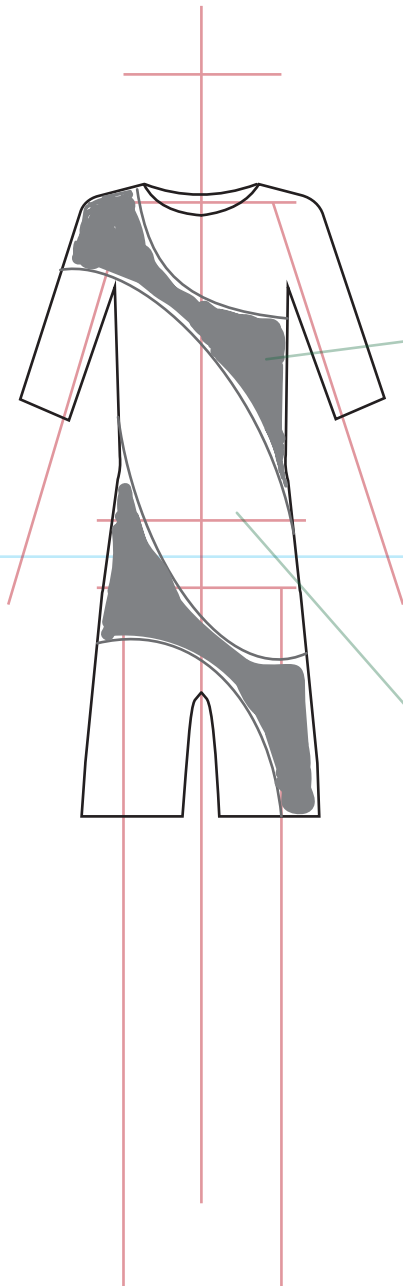
Reflective glow-in-the-dark panels make sure the wearer is visible in any weather or time.

Elasticated waist band for easy fit.

Back

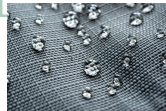


Front

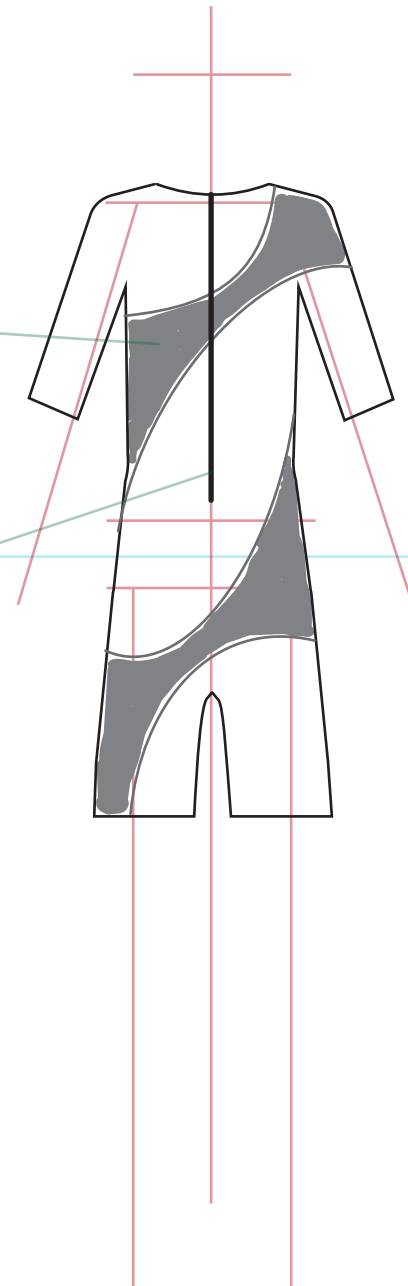


Reflective pattern for safety while cycling in the dark or fog.

A lycra blend fabric that is both flexible and comfortable. Perfect for cyclists.

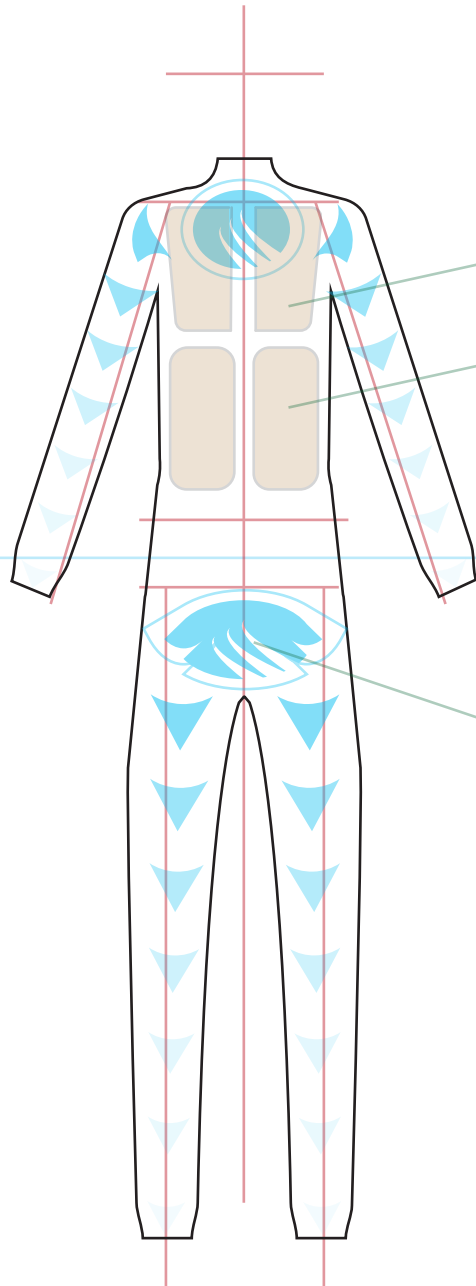


Back



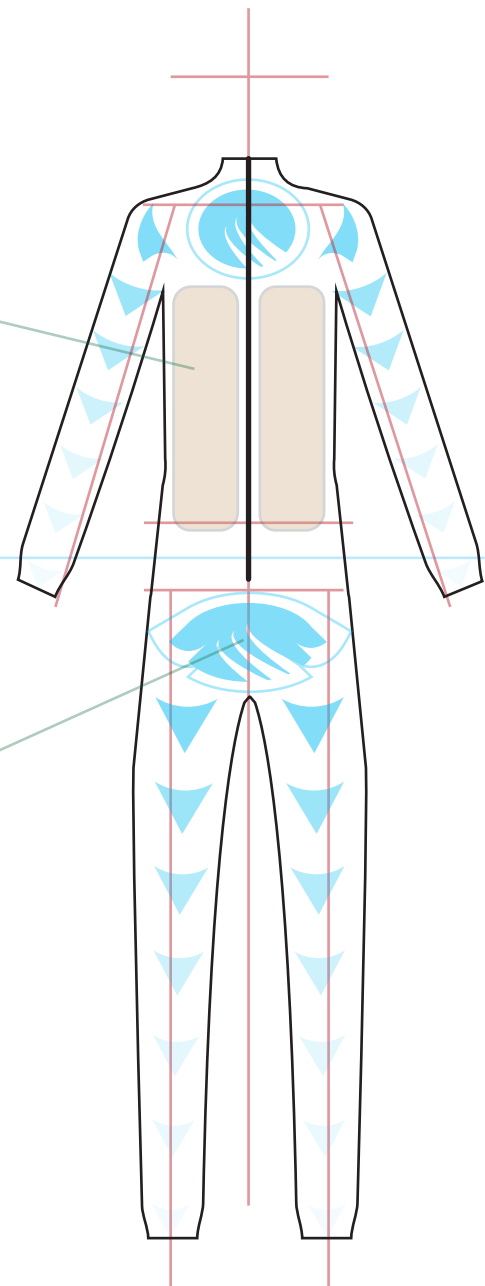
Flexible magnetic strips that create an easy but secure fastening method.

Front



Extra layers of support and protection against water pressure or sharks using tough but lightweight materials like Dyneema.

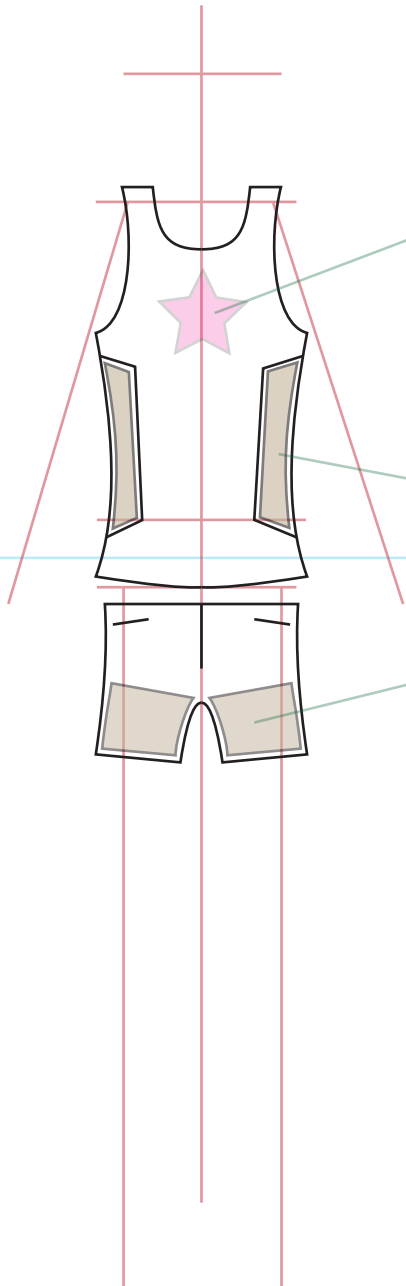
Back



AIR-Foam fabric is lighter than other wetsuit materials while still maintaining their stretch, warmth and durability.



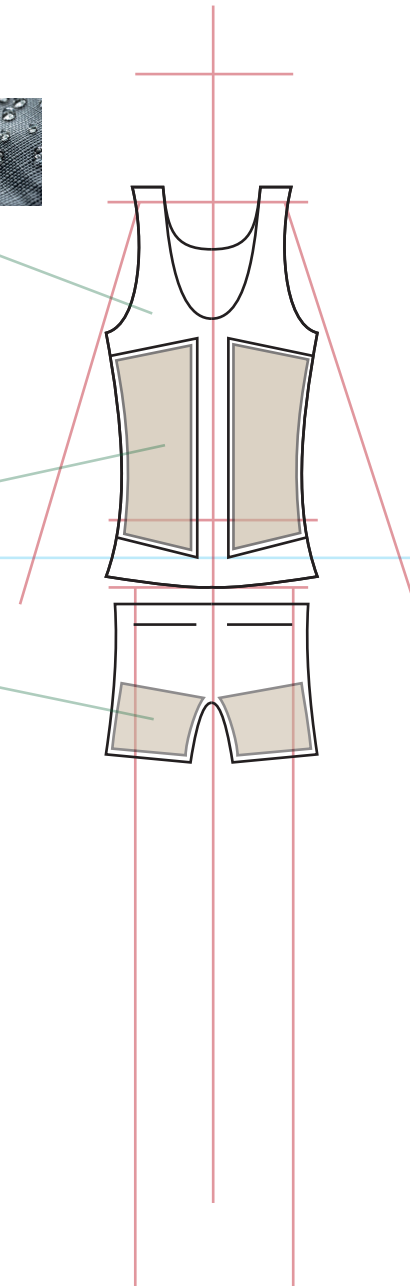
Front



Intergrated heartbeat and breathing monitor to help regulation during exercise and workouts.

Side, back, and thigh shaping to support the wearer's posture and protection against falls.

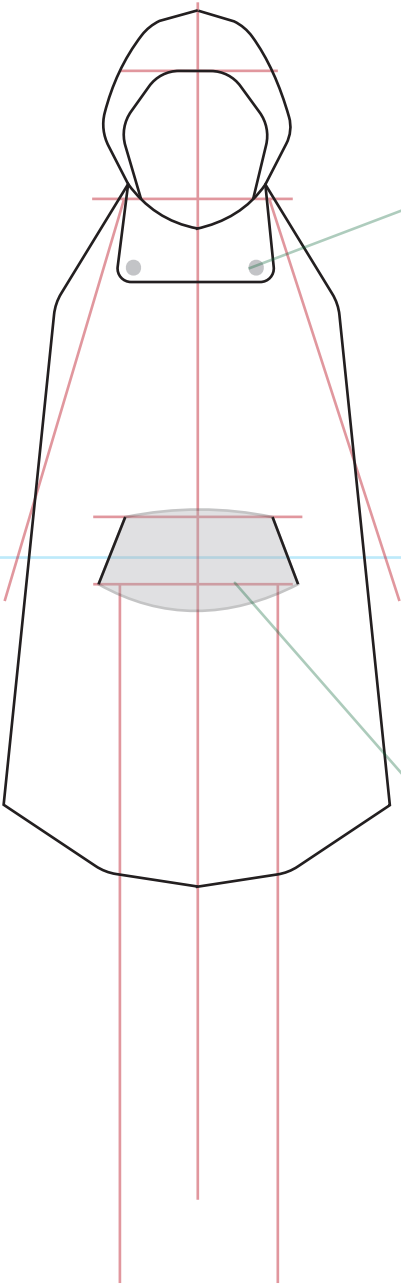
Back



Sprayed with a hydrophobic coating to protect against rain damage and sweat.



Front

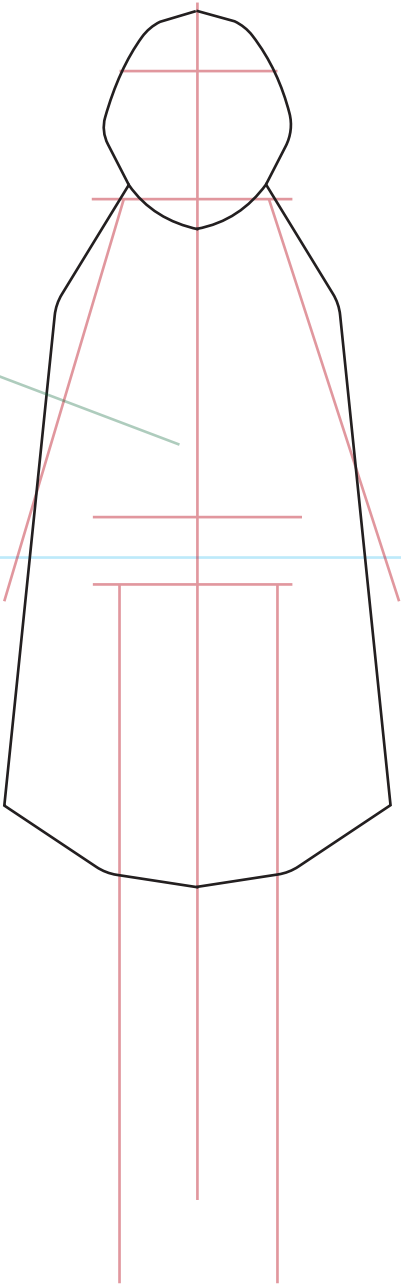


Foldable lower face protector with recycled ocean plastic clasps.

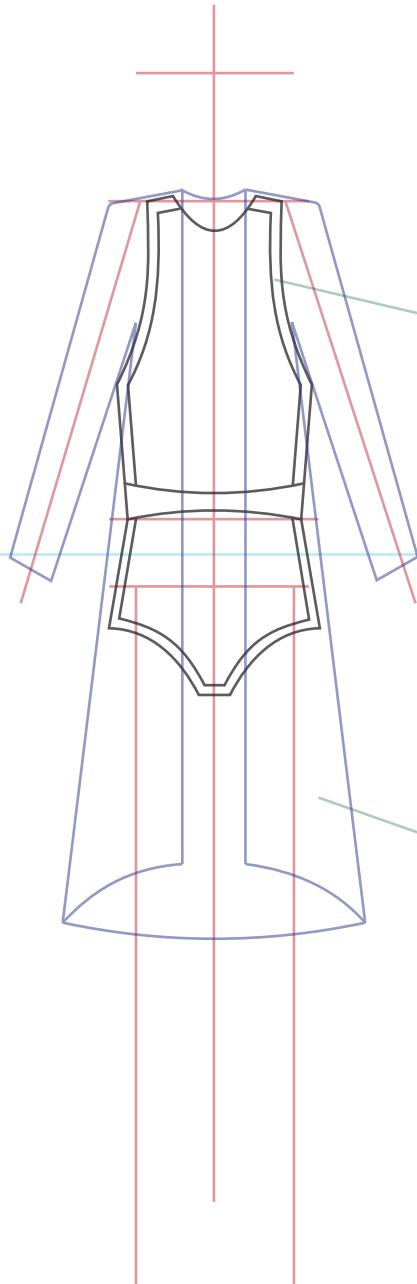


Sealable, air and water tight large middle pocket. Perfect for storing the wearer's valuables during wet weather.

Back

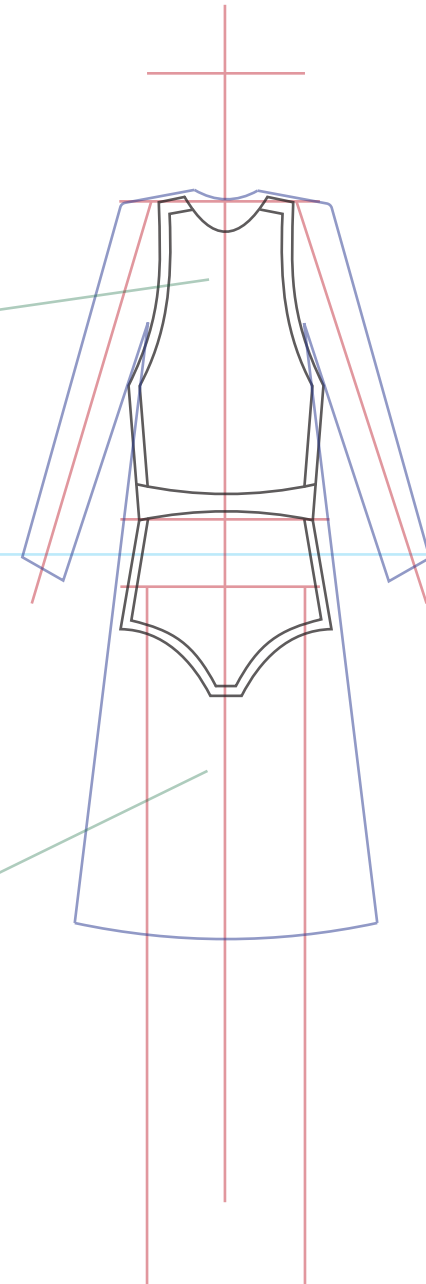


Front



Soft, lightweight material that is open and stretchable. Most probably made of a lycra blend of organic cotton.

Back

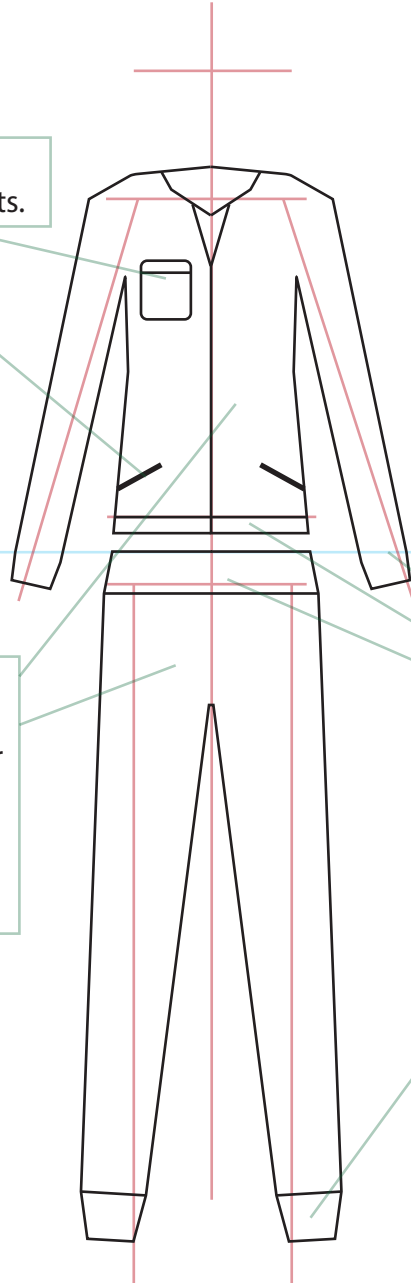


Lightweight, hemp blend outer garment with a hydrophobic coating.



Front

The tracksuit features insulated zip-up pockets.



Tracksuit incorporates a two-layer insulation with super soft wool inside and an hydrophobic coated organic cotton exterior.

Panels on the back, arms, and legs contain heated coils that can be charged using normal plugs.

Elasticated waistbands, ankles, and wrists for minimum heat loss or wind entry.

Back

